



PUBLIC SAFETY  
MEETING  
DECEMBER 2025

EMERGENCY  
MEDICAL  
SERVICES

# GRFD EMERGENCY MEDICAL SERVICES HISTORY



GRFD provides first aid



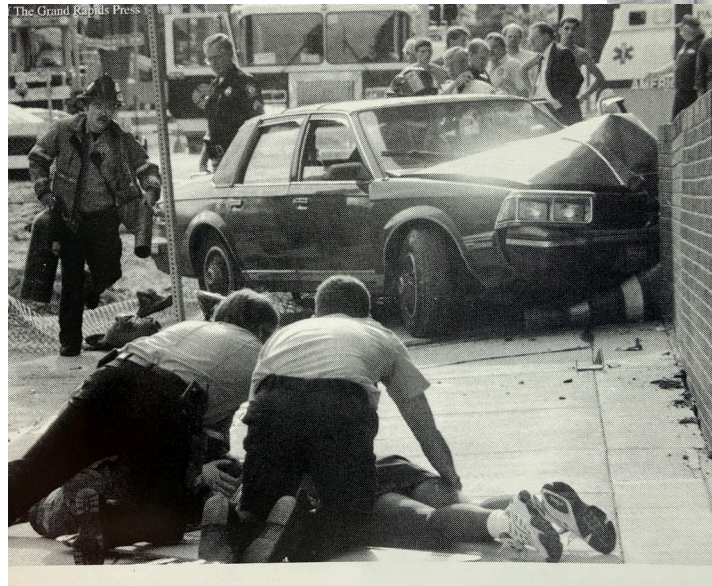
WALD DEAN AND EARL BLANCH  
MONSTRATING RESUSCITATOR

GRPD "E" unit  
1969-1989



NEWS > LOCAL NEWS > GRAND RAPIDS

Grand Rapids Fire Department licensed for basic life support



GRFD provides primary medical response | 1990-today



Photo by: Bill photo

By: Zac Harmon

Posted 12:54 PM, Oct 10, 2024

GRAND RAPIDS, Mich. — West Michigan's largest fire department can provide some basic life support care at the scenes of emergency following a multi-year effort for a new medical license.

The Grand Rapids Fire Department is now licensed as a Non-Transport Prehospital Basic Life Support agency. The license allows the fire department to provide continuous monitoring at the scene of an emergency.



MATT WITKOS  
GRAND RAPIDS

CONTACT YOUR REPORTER



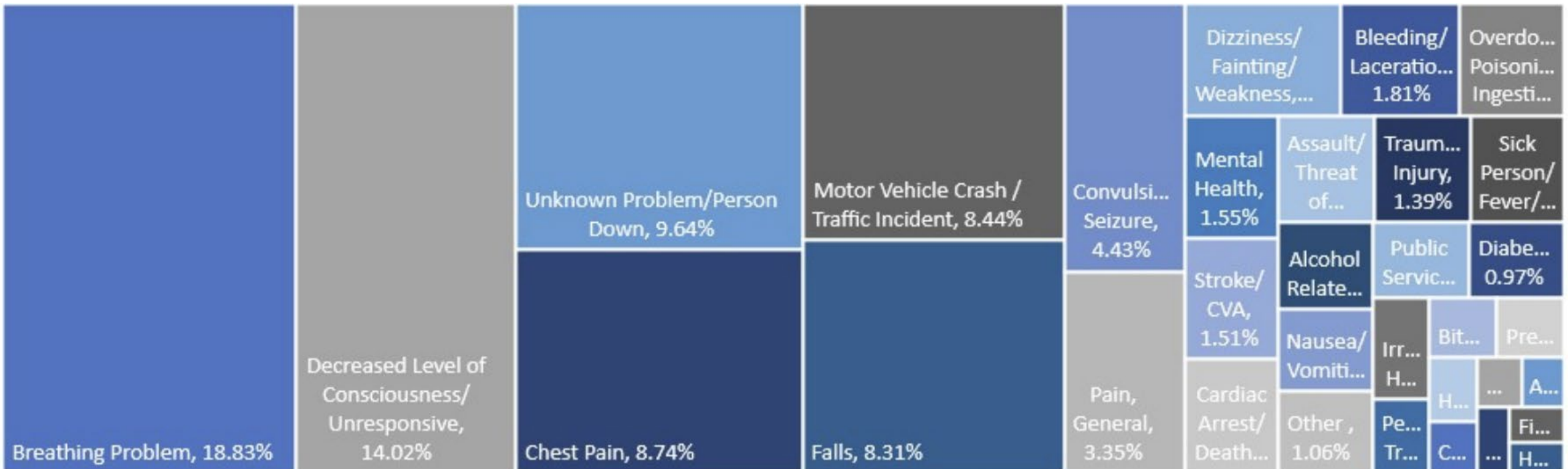
SAM LANDSTRA  
KENT COUNTY

CONTACT YOUR REPORTER

# TYPES OF CALLS WE RESPOND TO IN 2024

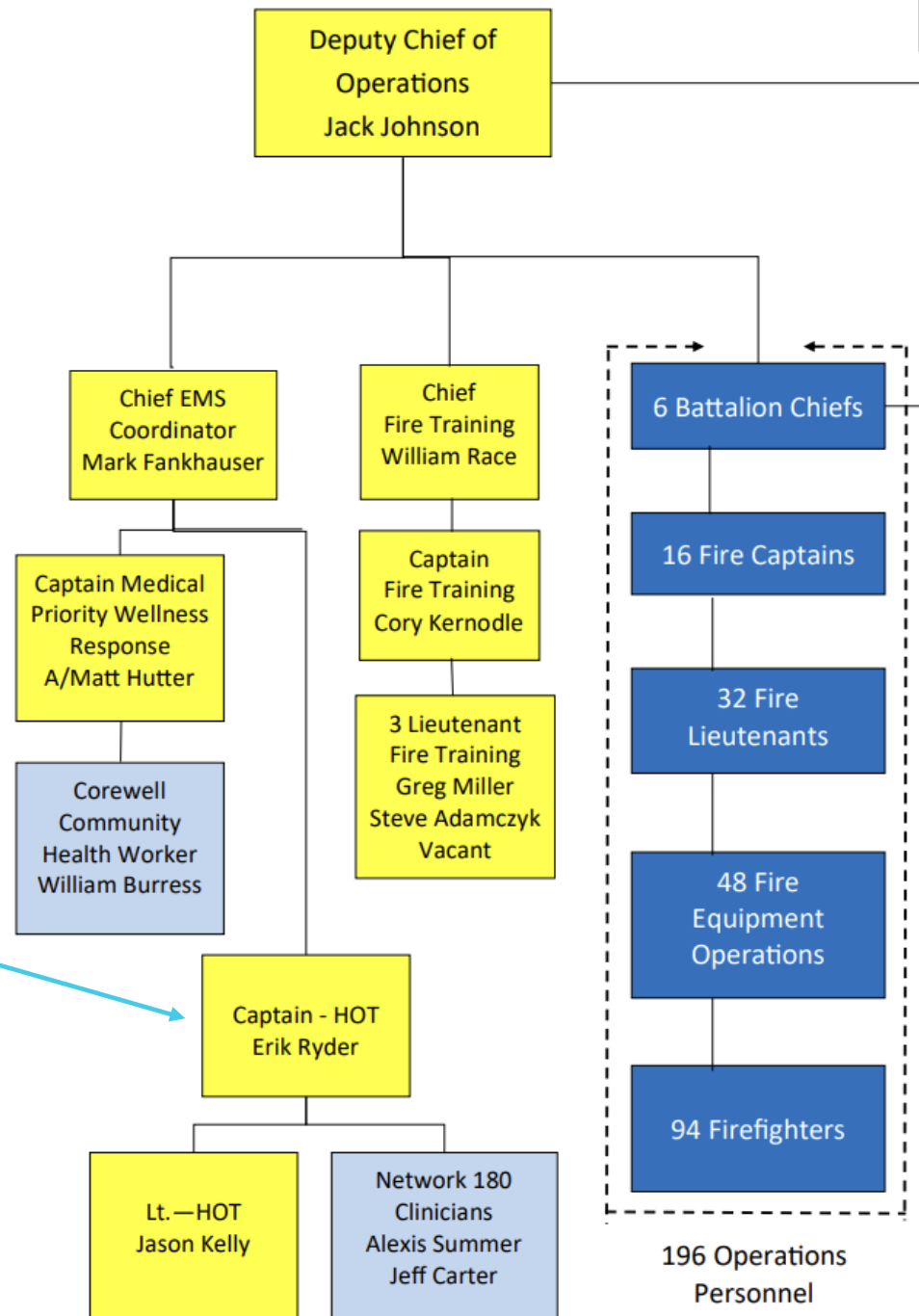
EMS incident numbers have risen steadily from just under 5,000 calls in 1990 to almost 17,000 today

Almost 14% of EMS incidents involve repeat 911 callers. 32 callers had 10 or more incidents over the past year accounting for approximately 5% of overall EMS volume.



# GRFD EMERGENCY MEDICAL SERVICES

- Something had to change with the response model as crews are busier than ever
- 1<sup>st</sup> step was to work with the most visible vulnerable population that you see with HOT
- Next step is to work with the most vulnerable population that we see with MPWR



# 2023 NATIONAL SURVEY ON MIH-CP

[MIHCP-PRESENTATION\\_MAY-2023.PDF](#)

- Over 400 programs in over 40 states
- For type of care offered: 94% offer ALS, 4% offer BLS, and 2% MFR
- 45% fire based, 16% hospital based
- Top 3 services offered:
  - High ED/911 use
  - Re-admission prevention
  - Care management coordination

# MEDICAL PRIORITY & WELLNESS RESPONSE



A true public private partnership with GRFD and Corewell Health to focus on repeat users of the 911 system that need additional support to utilize the most appropriate care models

# MPWR STAFFING

- GRFD

Captain of EMS to provide field knowledge, medical awareness, and a sense of community trust and safety

- Corewell

Community Health Worker to provide in depth knowledge of wrap around services and navigation of the health care system



## NEXT STEPS

- Finalize cross training
- Conduct site visit(s) to other successful programs
- Decide on initial participants
- Begin conducting in home visits early in 2026
- Track key metrics on successes
- Report back late 2026

