



COVID-19 Update

City of Grand Rapids

Allison Farole, Emergency Management Administrator

Chief John Lehman, Fire Chief

# Michigan COVID-19 Monitor

## Confirmed Cases

\*53

Michigan

Last update: a few seconds ago

## Total US Cases

\*4,265

\*Presumptive

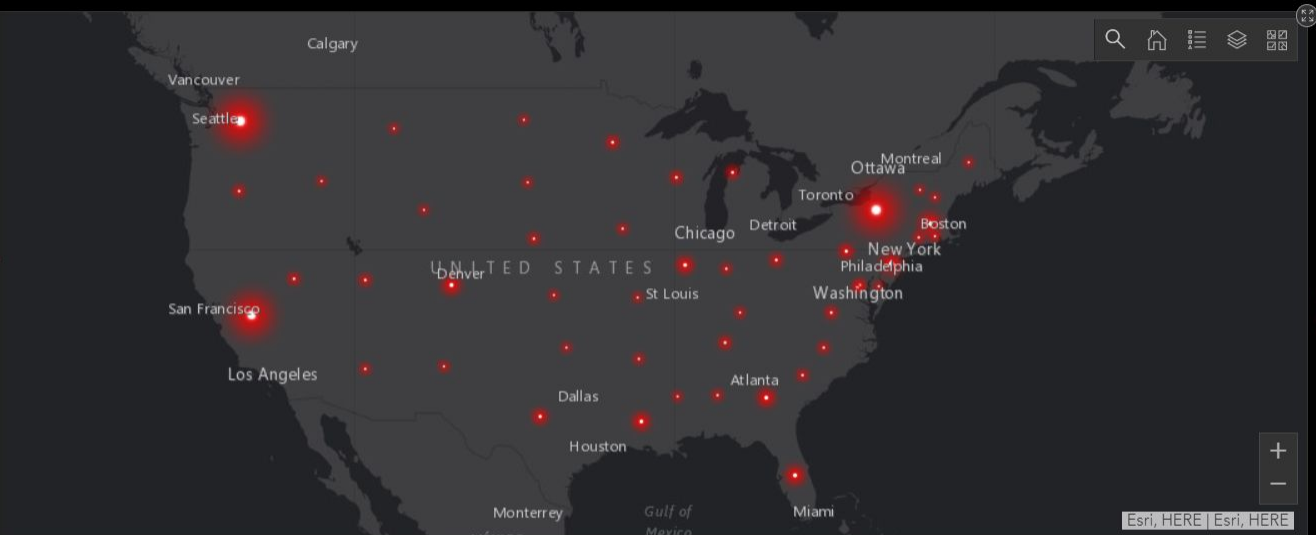
Last update: a few seconds ago

## US Deaths

77

Last update: a few seconds ago

\*Data is aggregated from a number of different sources to include but not limited to WHO, CDC, Official State Agencies/Authorities, Intergovernmental Organizations



Esri, HERE | Esri, HERE

Number of Cases Per State



Last update: a few seconds ago

Deaths Per State



Last update: a few seconds ago

# What We Know

## Kent County Snapshot

Tests Submitted: 89

Negative Tests: 26

Pending Tests: 58

Positive Tests: 5

- WHO declared on January 30 the COVID-19 outbreak a public health emergency of international concern
- Travel restrictions have been imposed by U.S. State Department
- CDC has provided travel guidance for cruise ship travel
- CDC has provided guidance for law enforcement, Fire/EMS, and Healthcare personnel
- State of Michigan activated the State Emergency Operations Center (SEOC)
- Kent County Health Department activated EOC
- CDC recommending gatherings to not be over 50 people □ President Trump asks for no more than 10 people in gatherings
- Governor Whitmer has enacted multiple Executive Orders
- Dr. Adam London, Health Officer for KCHD implemented an emergency order for all establishments to not be over 50% of their capacity limits
- **54 confirmed cases in Michigan; 5 in Kent County**



## Planning Efforts

- GR Emergency Management has been coordinating with Kent County Health Department
- GR Emergency Management has been providing daily situation reports to Top Management and stakeholders
- GR Emergency Management acting as Liaison to Kent County Health Department by participating in Incident Command meetings
- Discussing and emphasizing the potential for telework strategies and continuation of essential services within City departments
- Assessing Personal Protective Equipment (PPE) supplies
  - Currently, experiencing a shortage of supplies
  - Resource requests have been submitted to Michigan SEOC
- Grand Rapids EOC activated at Level 2
  - Virtual
  - Daily Briefings