



# Madison Avenue (Alger Street to Burton Street)

Concept Design  
Meeting Monday,  
September 16



## *Engineering Consultant*

Williams & Works – Heath Brinker

## *City Staff*

- Community Engagement – Layla Aslani and Juan Torres
- Engineering – Breese Stam
- Traffic Safety – John Bartlett

## Agenda

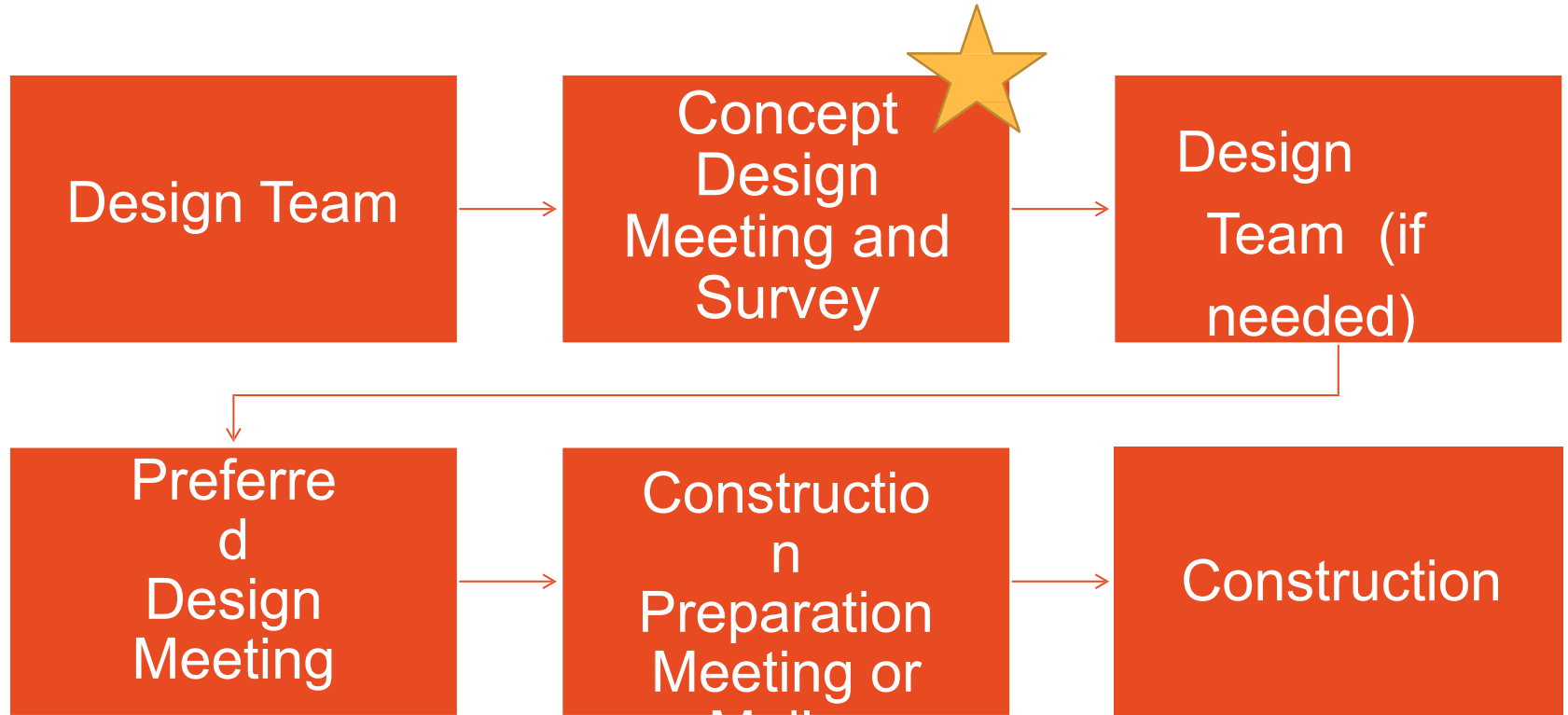
- Introductions
- Project Overview
- Guiding Documents and Principles
- Concept Design
- Discussion



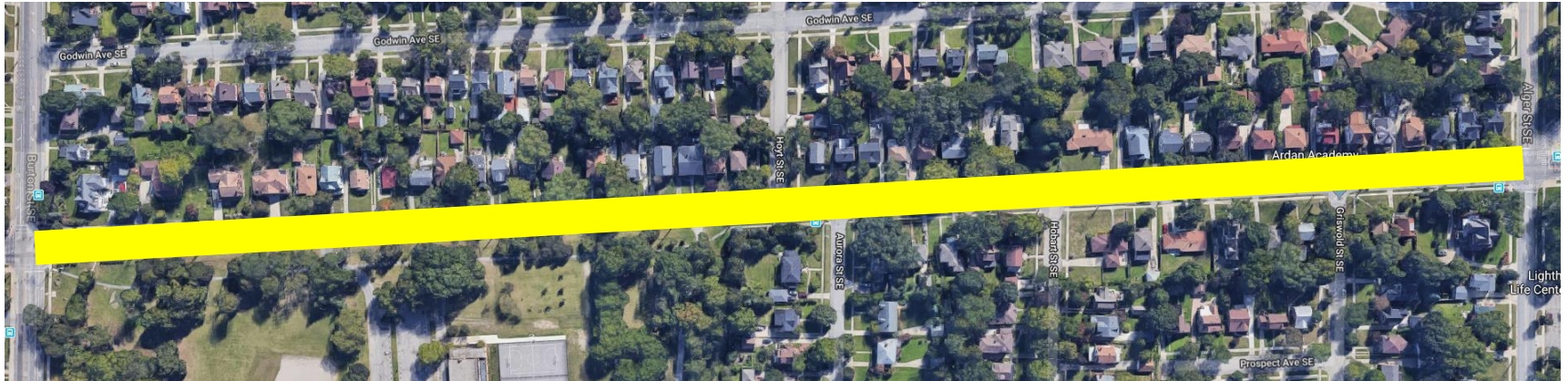


# Project Overview

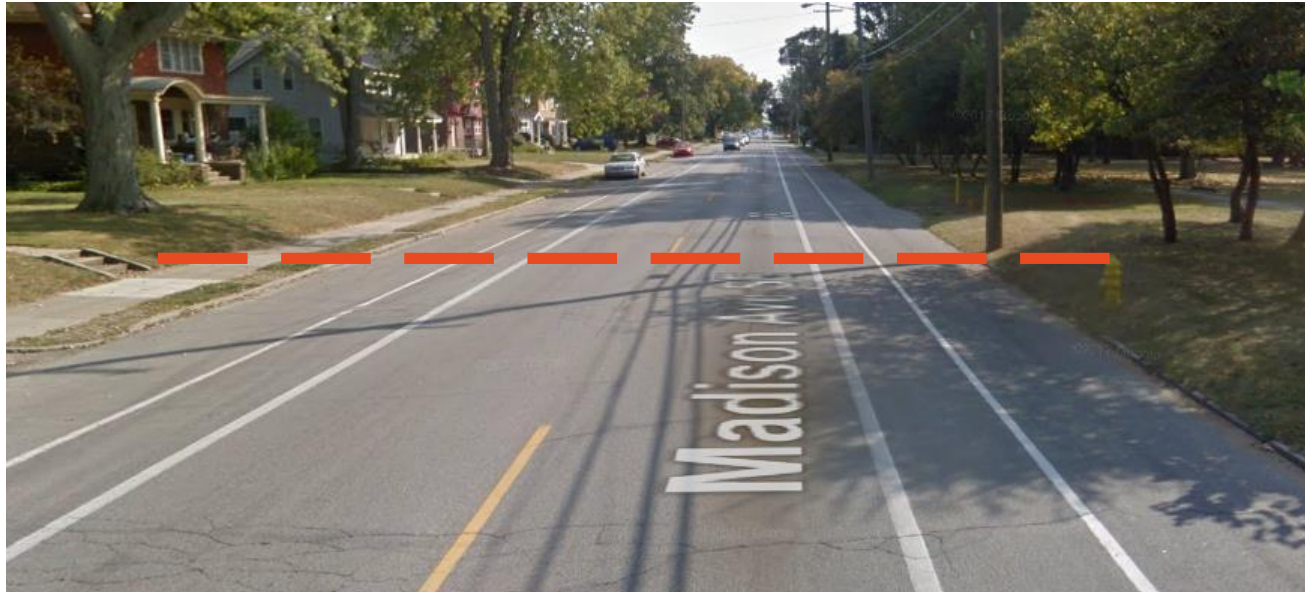




- Alger Street to Burton Street
- Resurfacing project
- Sidewalks fixed where needed
- 2020



- Street pavement condition rating of 5
- 66 foot public right of way
- 45 foot road width



## Existing Conditions

- Two travel lanes one in each direction
- 4.5-5ft bicycle lanes
- On-street parking on both sides of the street



## Parking Use

- Studied four days at five different times each day
- Late nights, early mornings, and weekends
- Peak parking needs Sunday afternoon with 38 of 132 (28%) street spaces used
- Average parking use is 23%



# Guiding Documents and Principles



All users include:

- People walking
- People driving
- People biking
- All ages, including seniors and children
- People of all abilities
- Trucks
- Buses



**1/3<sup>rd</sup>** of the population does not drive

Aging population:

- **1 in 5** seniors do not drive (AARP)
- Most seniors outlive their ability to drive by **7 to 10** years (AARP)

Ability:

- **20%** of Americans have a disability that limits their daily activities (US Census)
- **Nearly half** of people 65 and older have a disability (US Census)

Why all users?

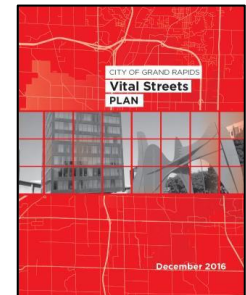
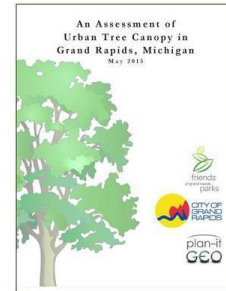
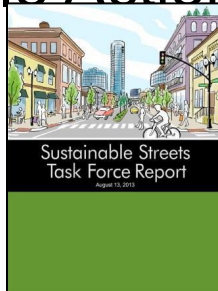
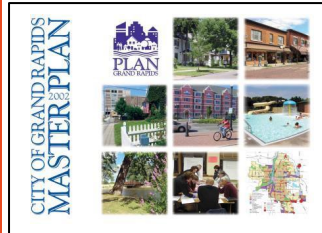
## Young people:

- **1/4th** do not have a driver's license (U.S. PIRG)
- 2001-2009 vehicle trips declined by **23%** (U.S. PIRG)
- Trips by bike ↑ **24%**, ↑ walking **16%**, ↑ transit **40%** (U.S. PIRG)

## Expense:

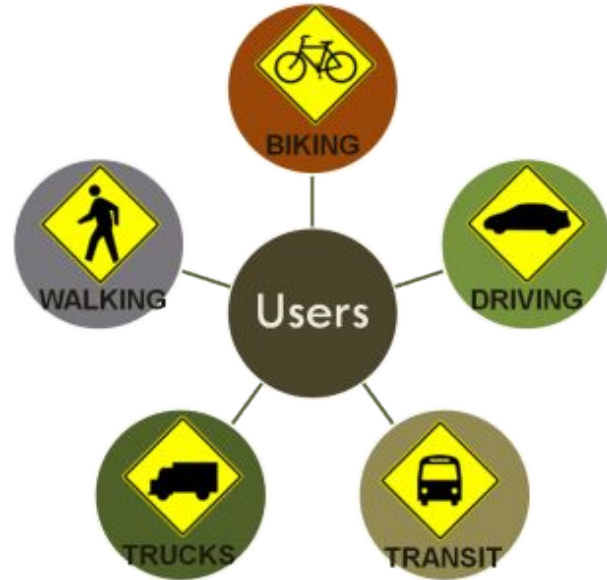
- Average cost of owning and operating one automobile (2018):  
**\$10,213/year** (AAA)
- Average household transportation costs (Grand Rapids MSA, 2015):  
**\$11,497/year** (H+T Index)

- 2000-2002 City Master Plan
- 2007-2010 Green Grand Rapids
- 2012-2013 Sustainable Streets Task Force Report
- 2015 Urban Tree Canopy Assessment
- 2016 Vital Streets Plan
- 2019 Bicycle Action Plan



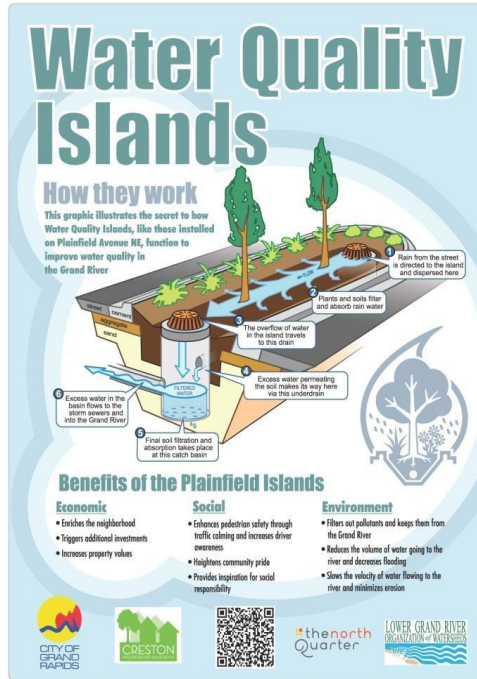
A system of streets...planned, designed,  
operated and maintained so all legal users may  
safely, comfortably and conveniently move along  
and across streets

~ PA 134 of 2010



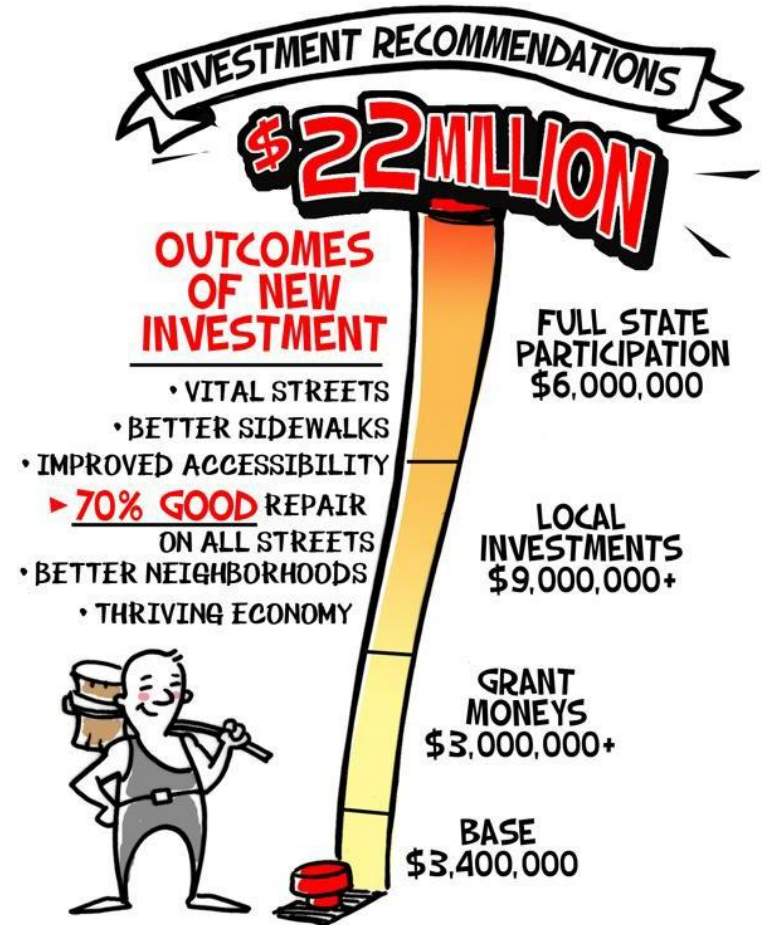
# Vital Streets

## Complete streets + green infrastructure



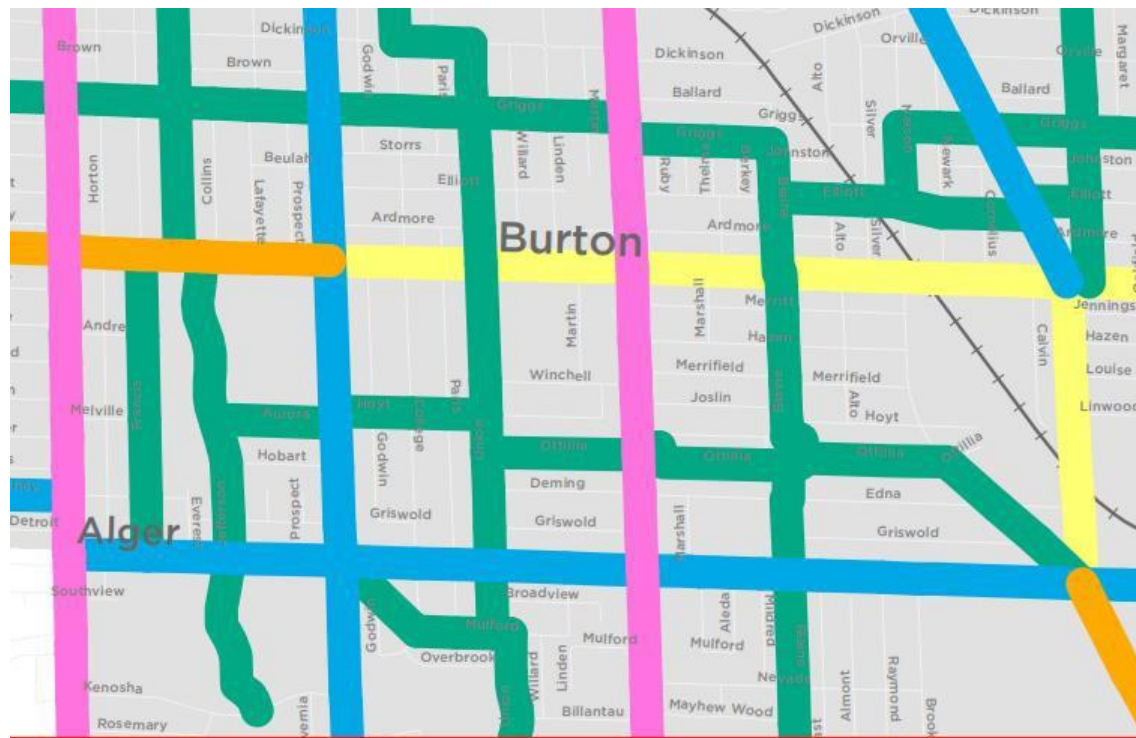
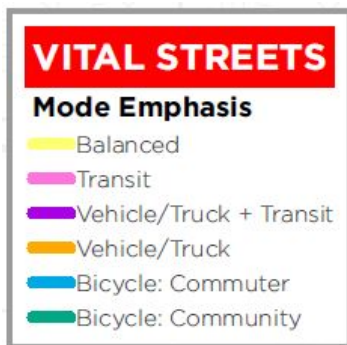
## Vital Streets Income Tax

- Passed in 2014
- 70% good and fair goal
- Aim to include Complete and Green Infrastructure in projects



## Vital Streets Plan

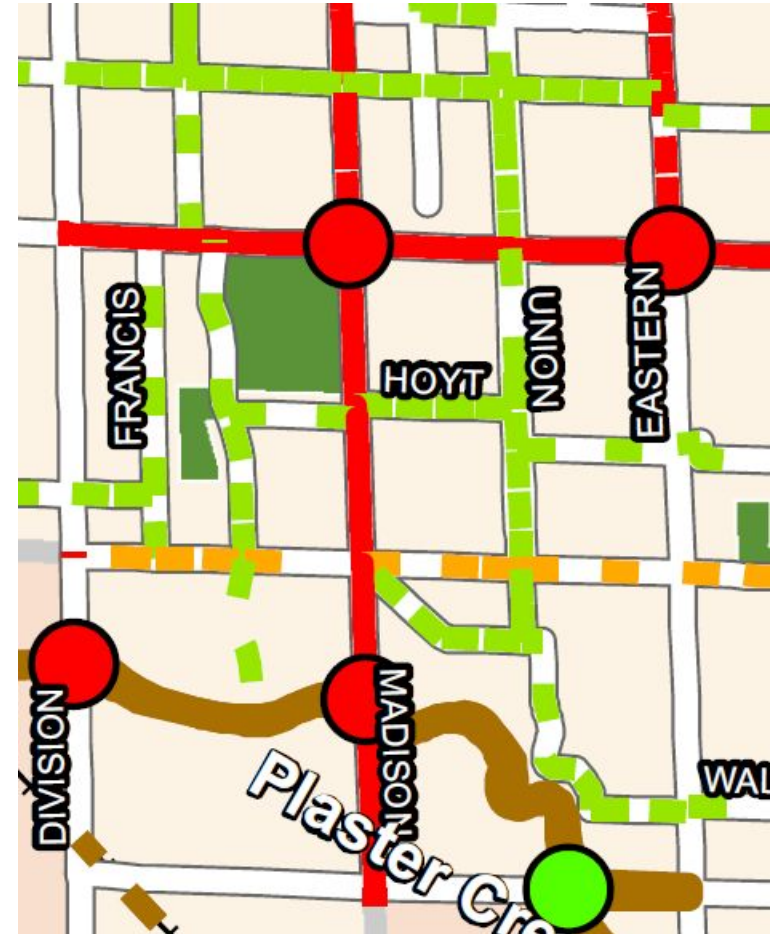
- This street identified as a community bicycle route



- Existing bicycle lanes
- New bike lanes proposed north; improved bike lanes to the south
- Raised bike lanes proposed on Alger

**Legend**

 Existing Separated Bikeway	 Existing Multi-use Trail
 Proposed Separated Bikeway	 Proposed Multi-use Trail
 Existing Bike Lane	 Connection Sidewalk
 Proposed Bike Lane	 Barricade/Safety Issue
 Existing Marked Shared Lane	 Connection
 Existing Signed Bike Route	 Improve Intersection
 Proposed Signed Bike Route/Bike Boulevard	 Proposed Underpass/Bridge
 Sidepath	
 Proposed Sidepath	



## Urban Tree Canopy

- 40% urban tree canopy goal
- This area has between than 31-40% canopy

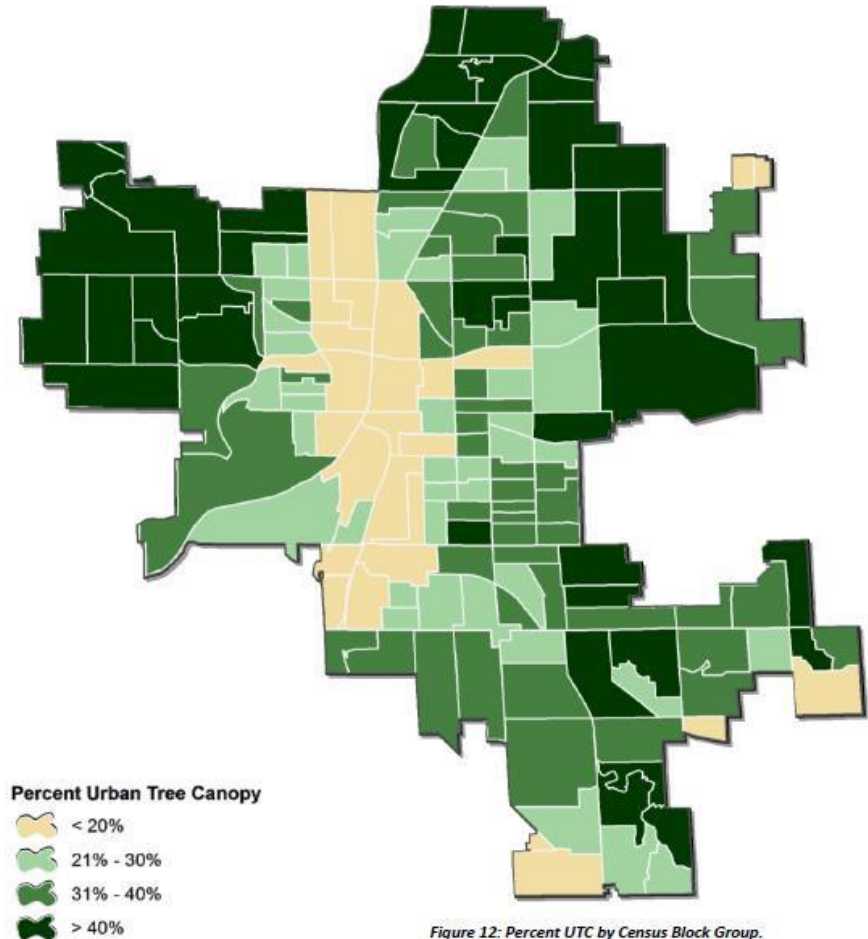


Figure 12: Percent UTC by Census Block Group.

## Urban Tree Canopy Value

- Environmental quality
- Public health
- Water quality
- Property value
- Aesthetics

34%

*Average (UTC) in  
Grand Rapids*

\$2.64

million\*

*Annual Ecosystem  
Services*

-0.7%

*Percentage Point  
UTC Change from  
2005-2014*

7,032

*Acres Possible  
Planting Area*

1,640

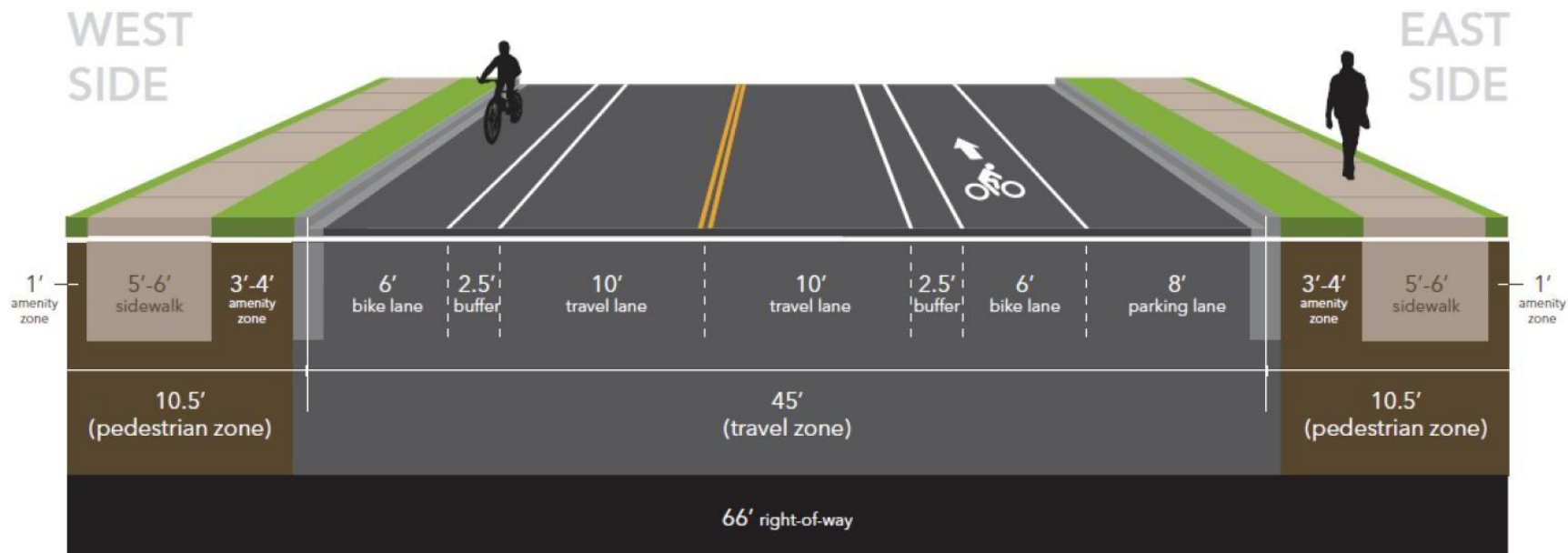
*Acres Increase  
Needed to Meet  
40% UTC Goal*



# Concept Design



# Madison Avenue (Burton to Alger) Concept Design



## Madison Avenue (Burton to Alger) Concept Design

- Curb extensions recommended at intersections
- Changes to the pedestrian crossing at Hoyt/Aurora – key access point to Garfield Park
- Looking into using porous pavement in parking lane to improve storm water management
- Removing right turn lane on Madison at Burton (N to E)
- Parkway is narrow – difficult to grow/support street trees
  - Resurfacing project so the curb line isn't moving except at intersections
  - Staff looking at options to improve conditions for existing, new trees



# Discussion



## Contact Information

- Road construction website:  
[grandrapidsmi.gov/roadconstruction](http://grandrapidsmi.gov/roadconstruction)
- City phone number: 311 or 456-3000

