



# **SOUTHSIDE CREEKWAYS**

## SILVER AND PLASTER CREEK TRAIL TRANSFORMATION PROJECT

August 2025 Presentation  
High Level Overview



**SMITHGROUP**

**SIDEWALK  
DETROIT**

**&Access**

mass | economics



**Moore + Bruggink**  
Consulting Engineers





- City of Grand Rapids – Parks
- City of Grand Rapids – Planning
- City of Grand Rapids – Economic Development
- City of Grand Rapids – Environmental Services
- City of Grand Rapids – Engineering
- Downtown Grand Rapids Inc.

## CONSULTANT TEAM

**SMITHGROUP**

**SIDEWALK  
DETROIT**

**&Access**

**mass** | economics

**Moore+Bruggink**  
Consulting Engineers

# WHO IS INVOLVED?

## ■ Project Team

- Conducting technical tasks and work
- Facilitating community engagement
- Developing plan materials

## ■ Community Leadership Team

- Guiding the vision/values/goals
- Supporting & leading key engagement efforts
- Shaping ideas, actions, projects

## ■ Community Residents/Businesses

- Engaging in the process
- Advocating for their community



# COMMUNITY LEADERSHIP TEAM (CLT)

## Implementation Leaders

Advancing hyperlocal projects to activate the corridor and build momentum and action

- Kenneth Cortez (Arts & Culture)
- Reyna Garcia (pending – Community Safety & Wellbeing)
- Synia Gant-Jordan (Economic Development)
- Jessica Austin (Environmental Sustainability)
- Tiawanna Ezell (Outdoor Recreation)

## Thought Partners

Supporting the planning and engagement process and help shape implementation projects

- Steff Rosalez (Arts & Culture)
- Ned Andree (Community Safety & Wellbeing)
- Regenail Thomas (Economic Development)
- Andrea Lubberts (Environmental Sustainability)
- Tecca Lynn Jones (Outdoor Recreation)

## Street Team

Communications and connectors, gathering localized feedback from the community

- Sheri Munsell (Community Safety & Wellbeing)
- Ebony Wilson (Economic Development)
- Johnnie Jordan (Economic Development)
- Yolanda Wilson (Environmental Sustainability)
- Haley Kornoelje (Environmental Sustainability)
- Shauntae Grey (Outdoor Recreation)



# PROJECT INTENT

Reimagine the Silver and Plaster Creek corridors as a connected system that improves the quality of life for Southside residents & businesses.

- Create safer connections for all people and modes of travel
- Strengthen the health & vitality of the community
- Provide new greenspaces & recreational opportunities
- Reflect the culture & identities of the Southside





# PROJECT TOPICS

## CONNECTIVITY & TRAILWAYS

Strengthen community connections



## URBAN ECOLOGY & CREEKSHEDS

Increase ecosystem quality & resilience



## ECONOMIC STRATEGY

Support small businesses & inclusive growth



## PLACE & IDENTITY

Reflect the community's culture & spirit



## LAND USE STRATEGY

Align land use with community needs & opportunities



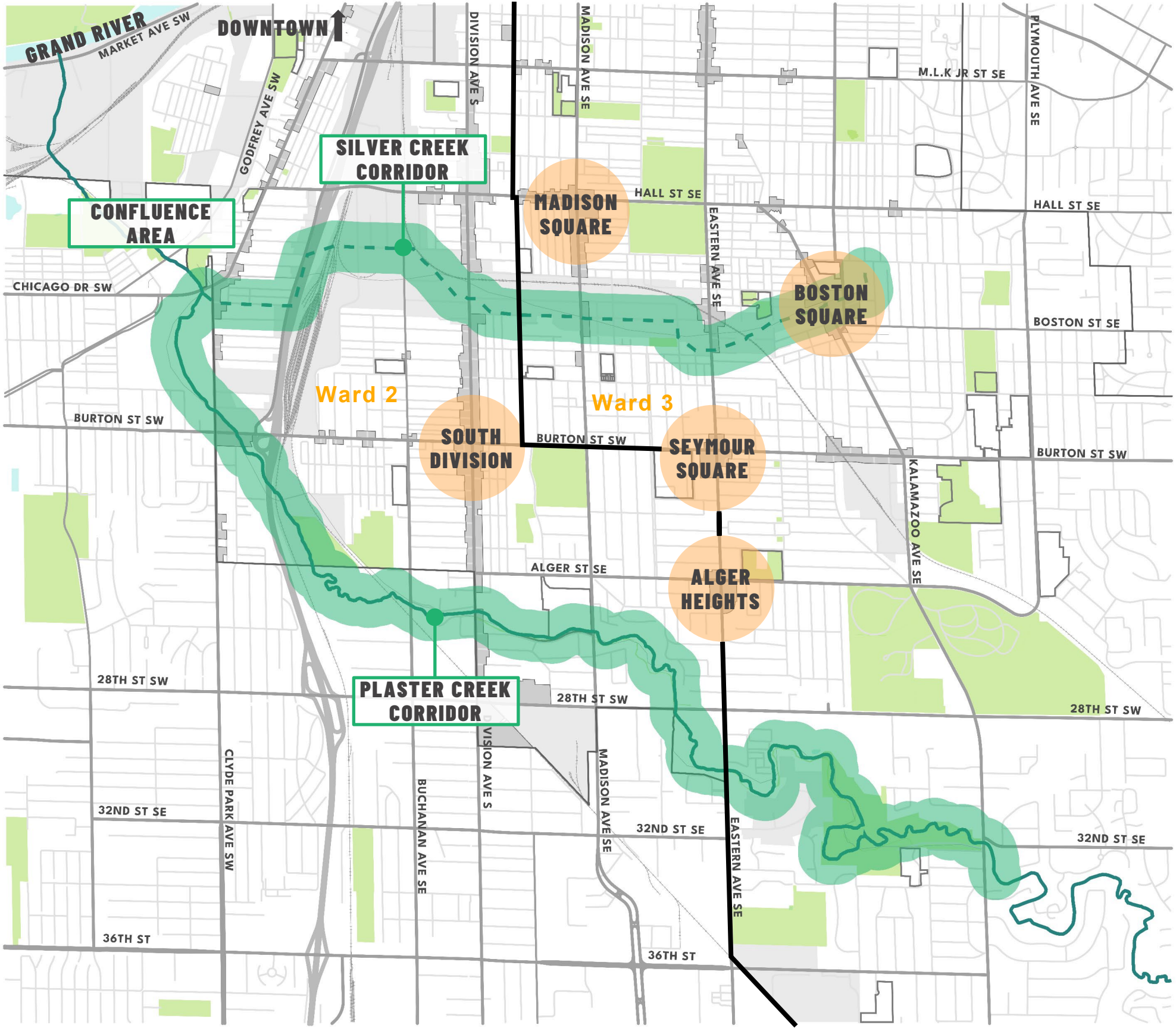


# PROJECT AREA

## PROJECT OVERVIEW

Three Zones:

- Silver Creek Area
- Plaster Creek Area
- Confluence Area





# VALUES + GOALS OVERVIEW

## PROJECT OVERVIEW

### Connectivity



- Neighborhoods
- People & place
- Public services
- Jobs and work
- Nature
- Recreation

### Safety



- Welcoming
- All ages
- All abilities
- Universal design
- Shared public use

### Vibrancy & Culture



- Local culture
- Oral histories
- Placemaking
- Activation

### Equity



- Anti-displacement
- Wealth building
- Reinvestment
- Vibrancy
- Empowerment

### Sustainability



- Stormwater management
- Ecological health
- Active lifestyles



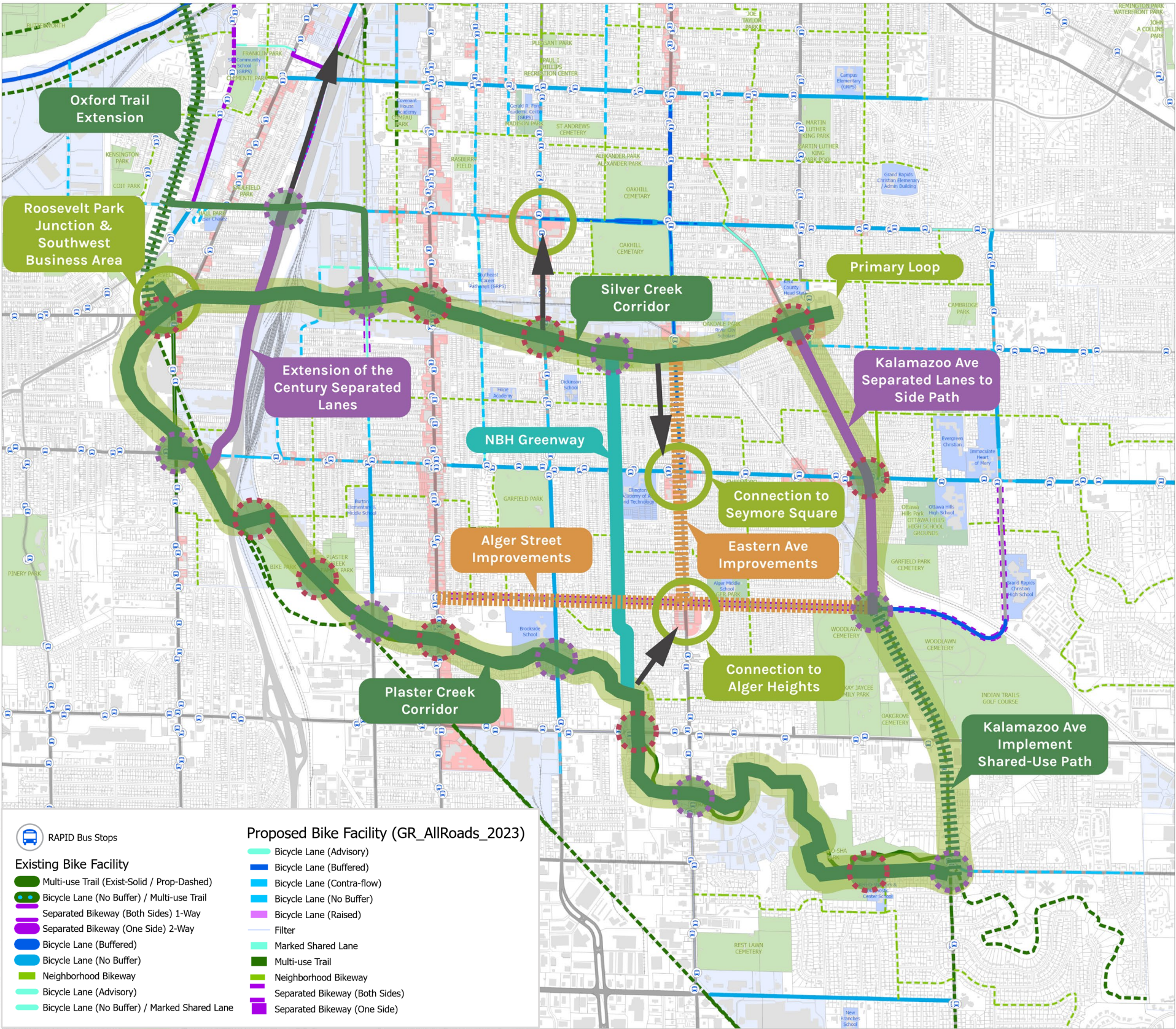
# CONNECTIVITY

## ANALYSIS FINDINGS

- Primary Trail Corridors
- Secondary Connections
- Neighborhoods
- Commercial Areas

Major Crossing / Access / Gateway Opportunity

Minor Crossing / Access / Gateway Opportunity









# DEMOGRAPHIC

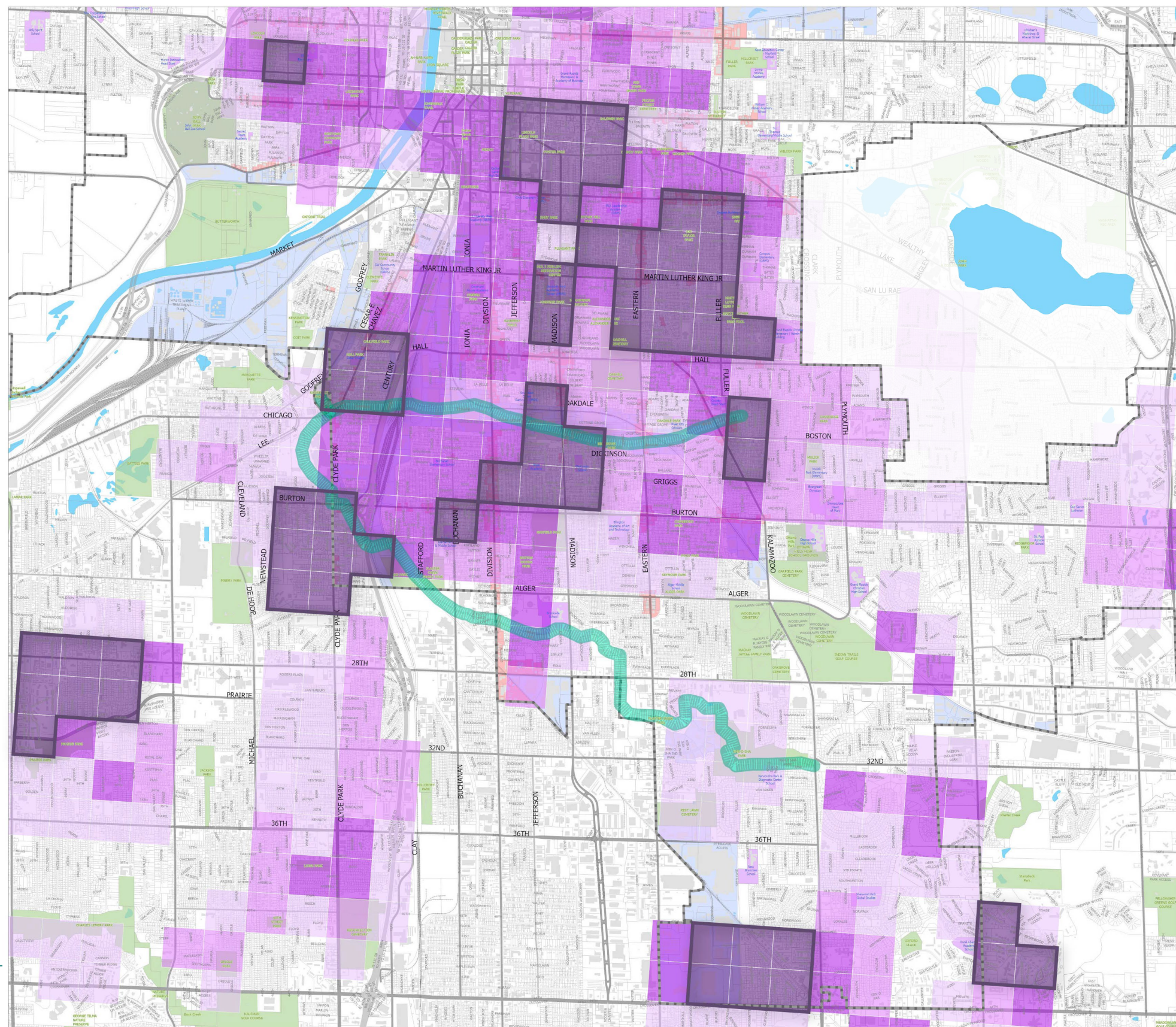
## ANALYSIS FINDINGS

### EQUITY ANALYSIS

- Identified top 20% for each factor:
  - Households below poverty level
  - Occupied housing units with no vehicle available
  - Households with people under 18, 60 or over
  - Population over 16 unemployed

### Equity factors within 1/4-mile grid

- In top 20% on all four factors
- In top 20% on three factors
- In top 20% on two factors
- In top 20% on one factor





# ENVIRONMENTAL

## ANALYSIS FINDINGS

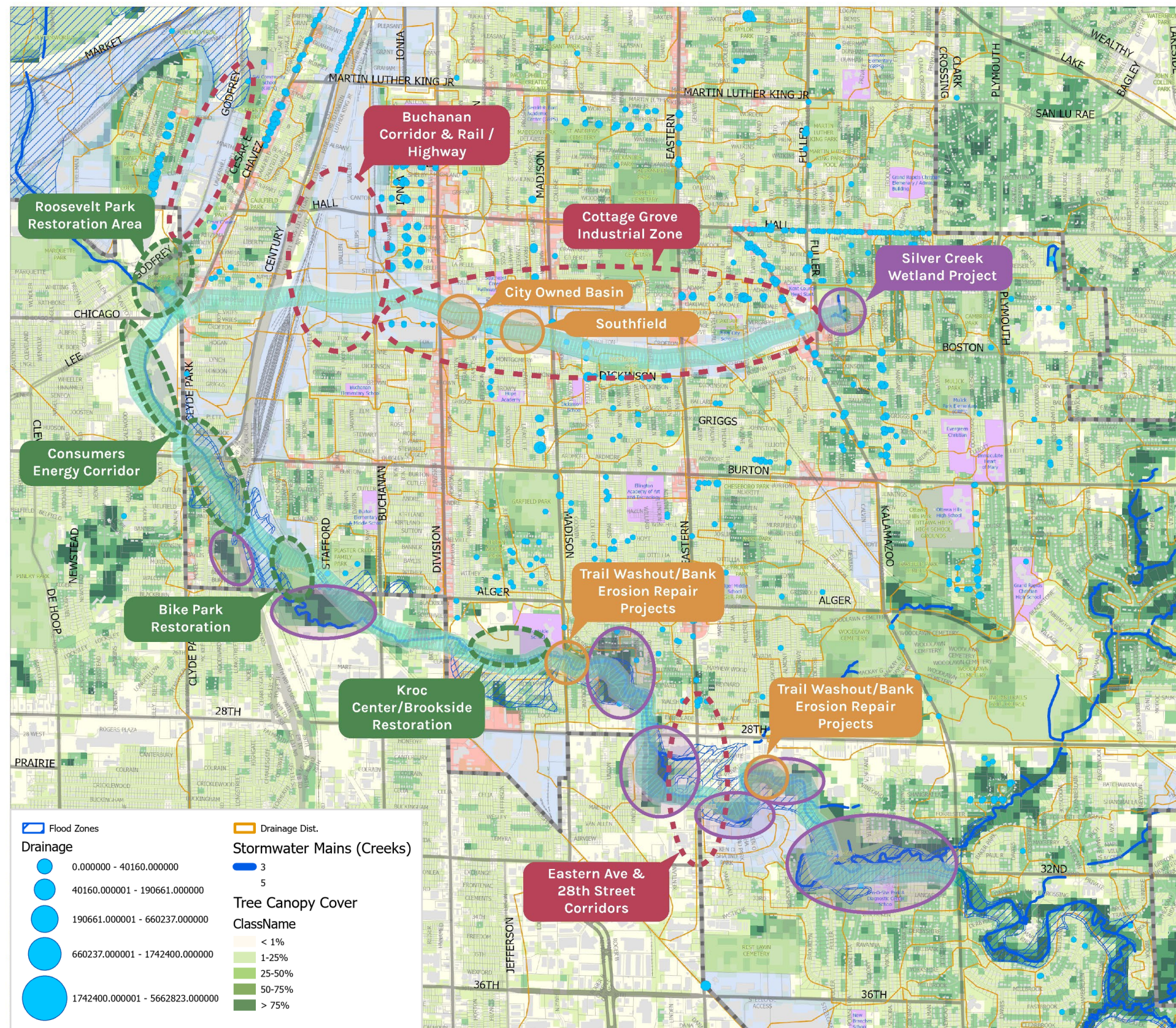
- Floodplain management
- Opportunities for “greening” areas of high hard surfaces
- Connection to natural areas
- Stream restoration
- Environmental health and comfort (manage heat island)

Existing natural areas - restoration opportunity

Open land - naturalization / major restoration

Highly Impervious / Limited Natural Cover

GR Silver & Plaster Creek Trail Transformation Project





# NEXT STEPS

- Wrapping up analysis and presenting results
- Working with Community Leadership Team to engage on neighborhood scale
- Beginning to shape early concepts and ideas

