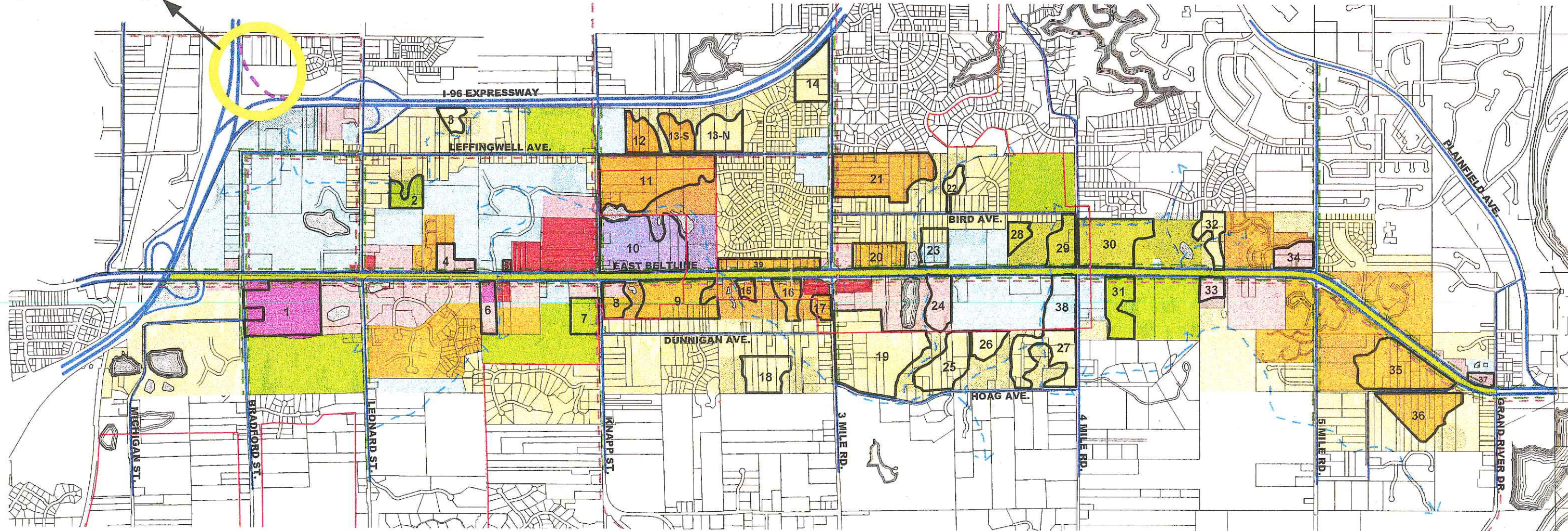


Proposed new interchange ramp



North East Beltline Joint Planning Study

City of Grand Rapids
Grand Rapids Township
Plainfield Township
MDOT

June, 1998

LEGEND

- Sidewalk
- Non-Motorized Path System
- Planned On-Street Bikeway
- Water Body
- Water/Sewer Service Area Boundary
- Designated Development Area
- Environmentally Sensitive Area

- Low Density Residential
- Medium Density Residential
- High Density Residential
- Park/Open Space
- Urban Agriculture
- Commercial
- Mixed Service
- Mixed Use
- Office
- Institutional

1"=2200'



Land Use Concept